

UNDER CONSTRUCTION: TOILETINFO.COM

TROUBLE SHOOTING AND REPAIR
TECHNIQUES AND TACTICS
FOR THE GENERAL TOILET

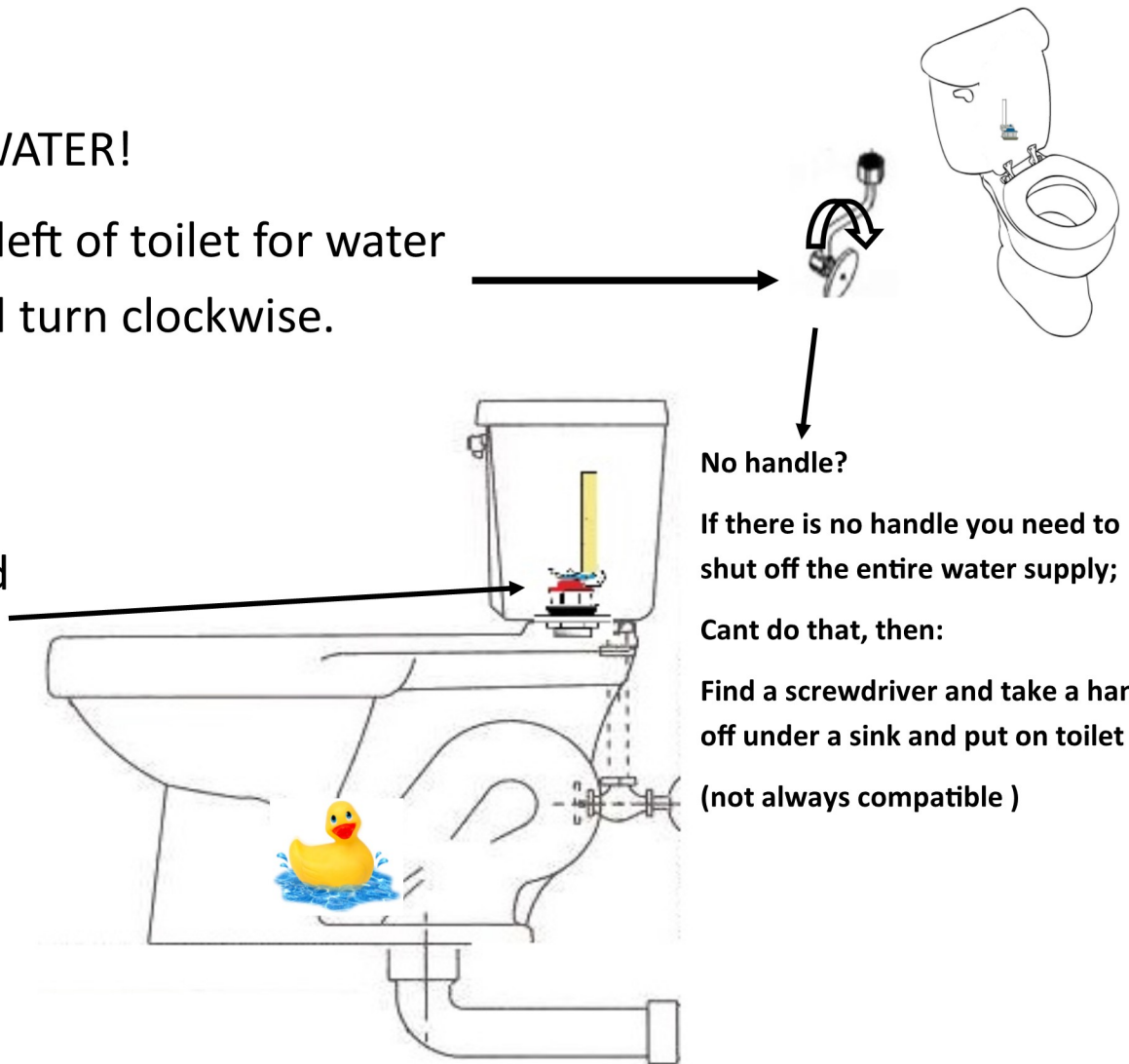
EMERGENCY:

1st: SHUT OFF WATER!

Look to bottom left of toilet for water supply valve and turn clockwise.

OR

Lift lid off tank
and reach in and
push down
flapper



FOR EMERGENCY SERVICE IN
THE SAINT CLOUD MN

AREA

CALL

320-217-3456

Disclaimer

The information on this site is for informational purposes only. Toiletinfo.com , its affiliates and content licensors assume no liability for any inaccurate, incomplete information or the outcome of any project. Always consult your local authority regarding plumbing codes for your area.